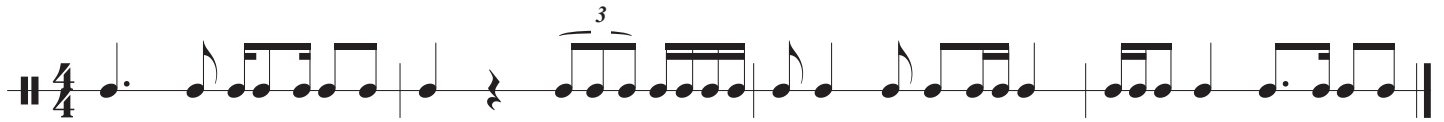


Rhythmic Sight Reading



Melodic Sight Reading

Soprano

Alto

Tenor

Bass

A four-part vocal setting of a short melody. The Soprano part is in treble clef with a key signature of one sharp (F#). The Alto part is in treble clef with a key signature of two sharps (F# and C#). The Tenor part is in treble clef with a key signature of one flat (Bb). The Bass part is in bass clef with a key signature of one flat (Bb). The melody consists of four measures: Measure 1 has a quarter note, a quarter note, a quarter note, and a quarter note. Measure 2 has a quarter note, a quarter note, a quarter note, and a quarter note. Measure 3 has a quarter note, a quarter note, a quarter note, and a quarter note. Measure 4 has a quarter note, a quarter note, a quarter note, and a quarter note.

Tonal Memory

You will hear 5 intervals played in random order. Listen carefully and echo back each interval after it is played.

- | | | |
|-------|-------------------------|-----------------|
| _____ | Major Triad | - do - mi - sol |
| _____ | Minor Triad | - do - me - sol |
| _____ | Diminished Triad | - do - me - se |
| _____ | Augmented Triad | - do - mi - si |
| _____ | Tri-tone | - do - fi |

Rhythmic Sight Reading



Melodic Sight Reading

Soprano

Alto

Tenor

Bass

Tonal Memory

You will hear 5 intervals played in random order. Listen carefully and echo back each interval after it is played.

_____	Major Triad	- do - mi - sol
_____	Minor Triad	- do - me - sol
_____	Diminished Triad	- do - me - se
_____	Augmented Triad	- do - mi - si
_____	Tri-tone	- do - fi

Rhythmic Sight Reading



Melodic Sight Reading

Soprano

Alto

Tenor

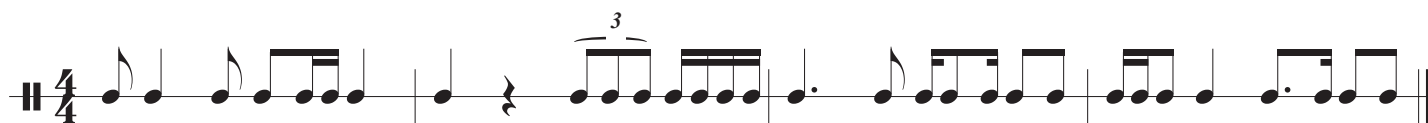
Bass

Tonal Memory

You will hear 5 intervals played in random order. Listen carefully and echo back each interval after it is played.

_____	Major Triad	- do - mi - sol
_____	Minor Triad	- do - me - sol
_____	Diminished Triad	- do - me - se
_____	Augmented Triad	- do - mi - si
_____	Tri-tone	- do - fi

Rhythmic Sight Reading



Melodic Sight Reading

Soprano

Alto

Tenor

Bass

A four-part vocal setting of a melodic sight reading exercise. The Soprano part is in treble clef with a key signature of one sharp (F#). The Alto part is in treble clef with a key signature of two sharps (F# and C#). The Tenor part is in treble clef with a key signature of one flat (Bb). The Bass part is in bass clef with a key signature of two flats (Bb and Eb). The music is in 4/4 time and consists of four measures. The melody is: G4, A4, B4, C5, D5, E5, F5, G5, A5, B5, C6, D6, E6, F6, G6, A6, B6, C7.

Tonal Memory

You will hear 5 intervals played in random order. Listen carefully and echo back each interval after it is played.

_____	Major Triad	- do - mi - sol
_____	Minor Triad	- do - me - sol
_____	Diminished Triad	- do - me - se
_____	Augmented Triad	- do - mi - si
_____	Tri-tone	- do - fi

Rhythmic Sight Reading

A single staff of music in 4/4 time. The piece begins with a quarter rest, followed by a quarter note. The next measure contains a triplet of eighth notes. This is followed by a dotted quarter note, an eighth note, a quarter note, and another eighth note. The final measure consists of a quarter note, a dotted quarter note, and a quarter note. The piece ends with a double bar line.

Melodic Sight Reading

A four-part vocal setting for Soprano, Alto, Tenor, and Bass. The music is in 4/4 time and the key signature has one sharp (F#). The Soprano part starts on G4, the Alto on E4, the Tenor on C4, and the Bass on G3. The melody is a simple diatonic scale: G-A-B-A-G-F-E-D-C-B-A-G. The Soprano part has a fermata on the final G. The Alto, Tenor, and Bass parts have a fermata on the final G.

Tonal Memory

You will hear 5 intervals played in random order. Listen carefully and echo back each interval after it is played.

- | | | |
|-------|-------------------------|-----------------|
| _____ | Major Triad | - do - mi - sol |
| _____ | Minor Triad | - do - me - sol |
| _____ | Diminished Triad | - do - me - se |
| _____ | Augmented Triad | - do - mi - si |
| _____ | Tri-tone | - do - fi |

Rhythmic Sight Reading



Melodic Sight Reading

Soprano

Alto

Tenor

Bass

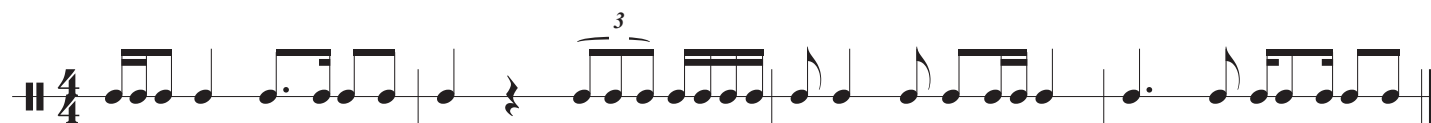
A four-part vocal setting of a melodic exercise. The Soprano part is in G major (one sharp). The Alto part is in D major (two sharps). The Tenor part is in B-flat major (two flats). The Bass part is in F major (one flat). The exercise consists of four measures of music, with each voice part having a unique melodic line.

Tonal Memory

You will hear 5 intervals played in random order. Listen carefully and echo back each interval after it is played.

- | | | |
|-------|-------------------------|-----------------|
| _____ | Major Triad | - do - mi - sol |
| _____ | Minor Triad | - do - me - sol |
| _____ | Diminished Triad | - do - me - se |
| _____ | Augmented Triad | - do - mi - si |
| _____ | Tri-tone | - do - fi |

Rhythmic Sight Reading



Melodic Sight Reading

Soprano

Alto

Tenor

Bass

A four-part vocal setting of a melodic sight reading exercise. The piece is in 4/4 time and features a key signature of one sharp (F#). The Soprano part is in treble clef, the Alto part is in treble clef, the Tenor part is in treble clef with an octave 8 below the staff, and the Bass part is in bass clef. The melody is a simple, stepwise line that moves from C4 to G4 in the Soprano part. The piece consists of four measures. The first measure contains a quarter note, followed by an eighth note, a quarter note, and another eighth note. The second measure contains a quarter note, a quarter note, and a quarter note. The third measure contains a quarter note, a quarter note, and a quarter note. The fourth measure contains a quarter note, a quarter note, and a quarter note. The piece ends with a double bar line.

Tonal Memory

You will hear 5 intervals played in random order. Listen carefully and echo back each interval after it is played.

- | | | |
|-------|-------------------------|-----------------|
| _____ | Major Triad | - do - mi - sol |
| _____ | Minor Triad | - do - me - sol |
| _____ | Diminished Triad | - do - me - se |
| _____ | Augmented Triad | - do - mi - si |
| _____ | Tri-tone | - do - fi |

Rhythmic Sight Reading



Melodic Sight Reading

Soprano

Alto

Tenor

Bass

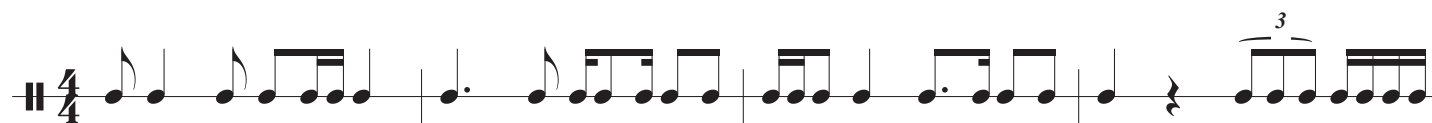
A four-part vocal setting in G major (one sharp) and 4/4 time. The Soprano part starts on G4 and moves up stepwise to D5. The Alto part starts on E4 and moves up stepwise to B4. The Tenor part starts on C4 and moves up stepwise to G4. The Bass part starts on G3 and moves up stepwise to D4. The melody is divided into four measures, each with a bar line. The Soprano and Alto parts have a final melisma on the last note of each measure.

Tonal Memory

You will hear 5 intervals played in random order. Listen carefully and echo back each interval after it is played.

_____	Major Triad	- do - mi - sol
_____	Minor Triad	- do - me - sol
_____	Diminished Triad	- do - me - se
_____	Augmented Triad	- do - mi - si
_____	Tri-tone	- do - fi

Rhythmic Sight Reading



Melodic Sight Reading

Soprano

Alto

Tenor

Bass

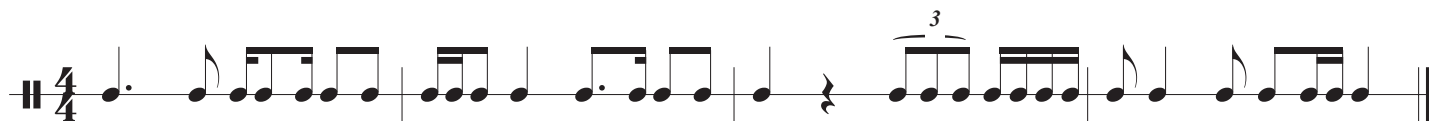
A four-part vocal setting of a melodic sight reading exercise. The Soprano part is in G major (one sharp). The Alto part is in D major (two sharps). The Tenor and Bass parts are in B minor (two flats). The exercise consists of four measures of music, with each voice part having a unique melodic line.

Tonal Memory

You will hear 5 intervals played in random order. Listen carefully and echo back each interval after it is played.

- | | | |
|-------|-------------------------|-----------------|
| _____ | Major Triad | - do - mi - sol |
| _____ | Minor Triad | - do - me - sol |
| _____ | Diminished Triad | - do - me - se |
| _____ | Augmented Triad | - do - mi - si |
| _____ | Tri-tone | - do - fi |

Rhythmic Sight Reading



Melodic Sight Reading

Soprano

Alto

Tenor

Bass

A four-part vocal setting of a short melody. The Soprano part is in G major (one sharp). The Alto, Tenor, and Bass parts are in F major (one flat). The melody consists of four measures. Each voice part has a unique line of music, with some parts featuring slurs and ties. The piece concludes with a double bar line.

Tonal Memory

You will hear 5 intervals played in random order. Listen carefully and echo back each interval after it is played.

- | | | |
|-------|-------------------------|-----------------|
| _____ | Major Triad | - do - mi - sol |
| _____ | Minor Triad | - do - me - sol |
| _____ | Diminished Triad | - do - me - se |
| _____ | Augmented Triad | - do - mi - si |
| _____ | Tri-tone | - do - fi |

Rhythmic Sight Reading



Melodic Sight Reading

Soprano

Alto

Tenor

Bass

A four-part vocal setting of a melodic exercise. The Soprano part is in G major (one sharp). The Alto part is in D major (two sharps). The Tenor and Bass parts are in B-flat major (two flats). The exercise consists of four measures of music, each with a different melodic line for each voice part.

Tonal Memory

You will hear 5 intervals played in random order. Listen carefully and echo back each interval after it is played.

- | | | |
|-------|-------------------------|-----------------|
| _____ | Major Triad | - do - mi - sol |
| _____ | Minor Triad | - do - me - sol |
| _____ | Diminished Triad | - do - me - se |
| _____ | Augmented Triad | - do - mi - si |
| _____ | Tri-tone | - do - fi |