

Rhythmic Sight-Reading



Melodic Sight-Reading

Soprano

Alto

Tenor

Bass

Four staves of music for Soprano, Alto, Tenor, and Bass. All staves are in 4/4 time and use the same melodic line: G4 (quarter), A4 (quarter), B4 (quarter), C5 (quarter), B4 (quarter), A4 (quarter), G4 (quarter), F#4 (quarter), E4 (quarter), D4 (quarter), C4 (half). The Soprano and Alto parts are in G major (one sharp), the Tenor part is in G minor (two flats), and the Bass part is in G major (one sharp).

Tonal Memory

You will hear 5 intervals played in random order.

Listen carefully and echo back each interval after it is played.

_____	Major Triad	- do - mi - sol
_____	Minor Triad	- do - me - sol
_____	Diminished Triad	- do - me - se
_____	Augmented Triad	- do - mi - si
_____	Tri-tone	- do - fi

Rhythmic Sight-Reading



Melodic Sight-Reading

Soprano

Alto

Tenor

Bass

A melodic sight-reading exercise for four voices: Soprano, Alto, Tenor, and Bass. Each part is written on a five-line staff in 4/4 time. The Soprano and Alto parts are in treble clef with a key signature of one sharp (F#). The Tenor and Bass parts are in bass clef with a key signature of two flats (Bb). The melody is consistent across all parts, starting with a quarter rest, followed by a quarter note, and then a series of eighth notes. A triplet of eighth notes is marked with a '3' above it. The exercise concludes with a double bar line.

Tonal Memory

You will hear 5 intervals played in random order.

Listen carefully and echo back each interval after it is played.

_____	Major Triad	- do - mi - sol
_____	Minor Triad	- do - me - sol
_____	Diminished Triad	- do - me - se
_____	Augmented Triad	- do - mi - si
_____	Tri-tone	- do - fi

Rhythmic Sight-Reading



Melodic Sight-Reading

Soprano

Alto

Tenor

Bass

Four vocal staves (Soprano, Alto, Tenor, Bass) in 4/4 time. Each staff contains a melodic line. The Soprano staff is in G major (one sharp). The Alto staff is in G major (one sharp). The Tenor staff is in B-flat major (two flats). The Bass staff is in B-flat major (two flats). The melody is the same for all parts, with each part transposed to its respective voice range.

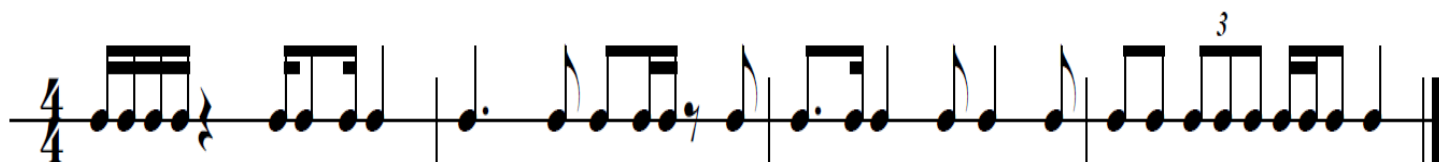
Tonal Memory

You will hear 5 intervals played in random order.

Listen carefully and echo back each interval after it is played.

_____	Major Triad	- do - mi - sol
_____	Minor Triad	- do - me - sol
_____	Diminished Triad	- do - me - se
_____	Augmented Triad	- do - mi - si
_____	Tri-tone	- do - fi

Rhythmic Sight-Reading



Melodic Sight-Reading

Soprano

Alto

Tenor

Bass

The melodic sight-reading exercise consists of four staves, one for each voice part: Soprano, Alto, Tenor, and Bass. Each staff is in 4/4 time and contains a single melodic line. The Soprano part is in the treble clef with a key signature of one sharp (F#). The Alto part is in the treble clef with a key signature of two sharps (F# and C#). The Tenor part is in the treble clef with a key signature of one flat (Bb). The Bass part is in the bass clef with a key signature of one flat (Bb). Each staff contains a sequence of notes and rests, ending with a double bar line.

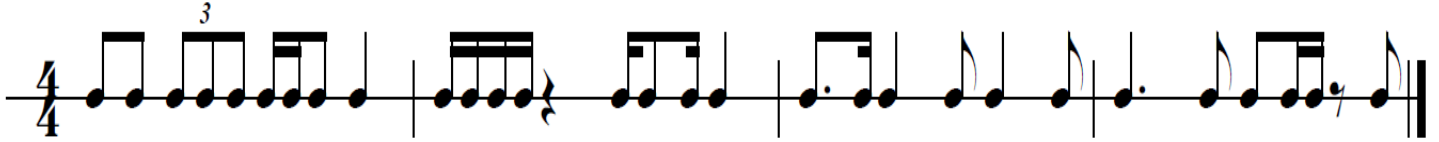
Tonal Memory

You will hear 5 intervals played in random order.

Listen carefully and echo back each interval after it is played.

_____	Major Triad	- do - mi - sol
_____	Minor Triad	- do - me - sol
_____	Diminished Triad	- do - me - se
_____	Augmented Triad	- do - mi - si
_____	Tri-tone	- do - fi

Rhythmic Sight-Reading



Melodic Sight-Reading

Soprano

Alto

Tenor

Bass

The melodic sight-reading exercise is presented in four parts: Soprano, Alto, Tenor, and Bass. Each part is written on a staff in 4/4 time. The key signature is one sharp (F#). The Soprano part starts on G4, the Alto on E4, the Tenor on C4, and the Bass on G3. The melody is a simple, stepwise line that moves up and down across the four parts.

Tonal Memory

You will hear 5 intervals played in random order.

Listen carefully and echo back each interval after it is played.

_____	Major Triad	- do - mi - sol
_____	Minor Triad	- do - me - sol
_____	Diminished Triad	- do - me - se
_____	Augmented Triad	- do - mi - si
_____	Tri-tone	- do - fi

Rhythmic Sight-Reading



Melodic Sight-Reading

Soprano

Alto

Tenor

Bass

The melodic sight-reading exercise consists of four staves, each representing a different voice part: Soprano, Alto, Tenor, and Bass. All parts are in 4/4 time and use a key signature of one sharp (F#). The Soprano part begins on G4. The Alto part begins on G4. The Tenor part begins on G3. The Bass part begins on G2. Each part contains a sequence of notes and rests, with some notes beamed together to indicate eighth notes. The exercise concludes with a double bar line.

Tonal Memory

You will hear 5 intervals played in random order.

Listen carefully and echo back each interval after it is played.

_____	Major Triad	- do - mi - sol
_____	Minor Triad	- do - me - sol
_____	Diminished Triad	- do - me - se
_____	Augmented Triad	- do - mi - si
_____	Tri-tone	- do - fi

Rhythmic Sight-Reading



Melodic Sight-Reading

Soprano

Alto

Tenor

Bass

The melodic sight-reading exercise is presented in four parts: Soprano, Alto, Tenor, and Bass. Each part is written on a five-line staff in 4/4 time. The Soprano part is in G major (one sharp). The Alto, Tenor, and Bass parts are in B minor (two sharps). The melody is the same for all parts, starting with a quarter note, followed by a dotted quarter note, and then a series of eighth notes. The piece ends with a double bar line.

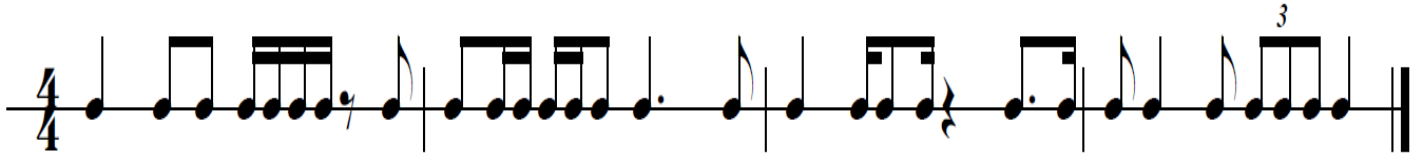
Tonal Memory

You will hear 5 intervals played in random order.

Listen carefully and echo back each interval after it is played.

_____	Major Triad	- do - mi - sol
_____	Minor Triad	- do - me - sol
_____	Diminished Triad	- do - me - se
_____	Augmented Triad	- do - mi - si
_____	Tri-tone	- do - fi

Rhythmic Sight-Reading



Melodic Sight-Reading

Soprano

Alto

Tenor

Bass

Four staves of music for Soprano, Alto, Tenor, and Bass. The key signature has one sharp (F#) and the time signature is 4/4. The melody is written in a stepwise fashion across all four parts, starting on a half note and ending with a double bar line.

Tonal Memory

You will hear 5 intervals played in random order.

Listen carefully and echo back each interval after it is played.

_____	Major Triad	- do - mi - sol
_____	Minor Triad	- do - me - sol
_____	Diminished Triad	- do - me - se
_____	Augmented Triad	- do - mi - si
_____	Tri-tone	- do - fi

Rhythmic Sight-Reading



Melodic Sight-Reading

Soprano

Alto

Tenor

Bass

Four staves of music, each representing a different voice part: Soprano, Alto, Tenor, and Bass. Each staff contains a melodic line in 4/4 time, starting with a treble clef and a key signature of one sharp (F#). The music is written in a simple, accessible style suitable for sight-reading.

Tonal Memory

You will hear 5 intervals played in random order.
Listen carefully and echo back each interval after it is played.

- | | | |
|-------|------------------|-----------------|
| _____ | Major Triad | - do - mi - sol |
| _____ | Minor Triad | - do - me - sol |
| _____ | Diminished Triad | - do - me - se |
| _____ | Augmented Triad | - do - mi - si |
| _____ | Tri-tone | - do - fi |

Rhythmic Sight-Reading



Melodic Sight-Reading

Soprano

Alto

Tenor

Bass

The melodic sight-reading exercise consists of four staves, one for each voice part: Soprano, Alto, Tenor, and Bass. All parts are in 4/4 time. The Soprano and Alto parts are in the key of D major (one sharp). The Tenor and Bass parts are in the key of B minor (two flats). Each part begins with a quarter note, followed by a quarter note, then a quarter note with a beamed eighth note. This is followed by a quarter note with a beamed eighth note, then a quarter note with a beamed eighth note. The piece ends with a quarter note, then a quarter note with a beamed eighth note, then a quarter note with a beamed eighth note, and finally a quarter note with a beamed eighth note. The piece concludes with a double bar line.

Tonal Memory

You will hear 5 intervals played in random order.

Listen carefully and echo back each interval after it is played.

_____	Major Triad	- do - mi - sol
_____	Minor Triad	- do - me - sol
_____	Diminished Triad	- do - me - se
_____	Augmented Triad	- do - mi - si
_____	Tri-tone	- do - fi